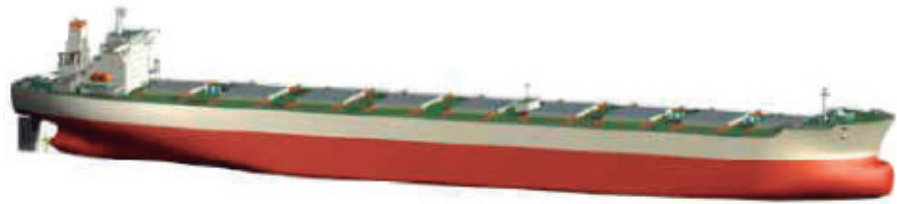
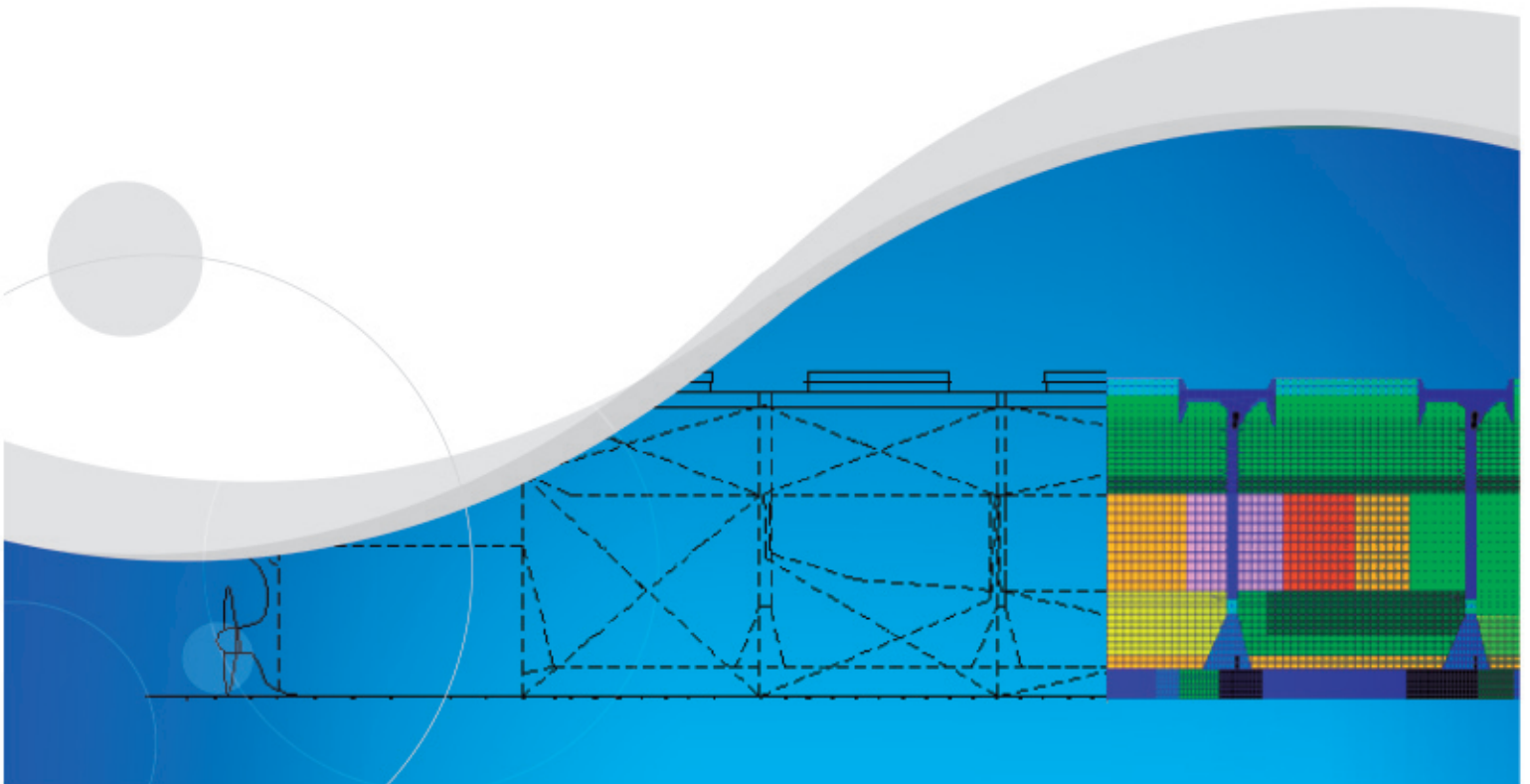


Ship Structural Assessment



Common Structural Rules for Bulk Carriers and Oil Tankers (CSR-JBP/JTP) established by IACS have taken effect since April 1 2006. As a co-sponsor and main contributor to JBP, CCS has participated in the whole process of establishing CSR-JBP while also carrying out active research on CSR-JTP and following its development. CCS has developed calculation software for CSR-JBP/JTP, gained significant knowledge on the background and principles of the rules and accumulated rich experience thereon. To meet the demands of shipbuilding market and shipyards/ designers, CCS launched CSR-based ship structural assessment service, assisting customers in developing ship types according to the CSR-JBP/JTP or in upgrading the existing designs.

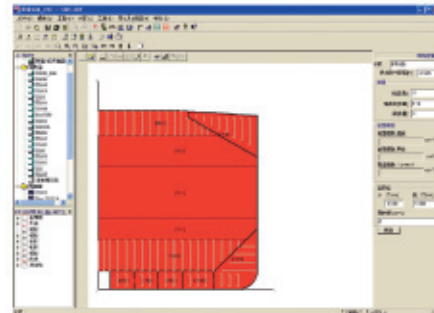
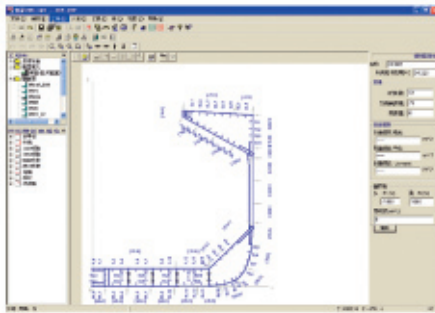


Ship Structural Assessment

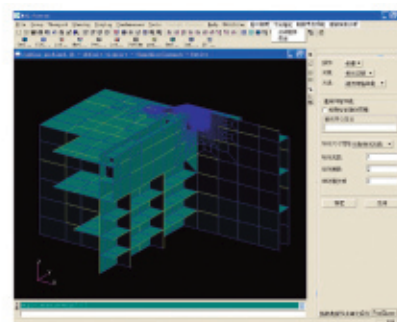
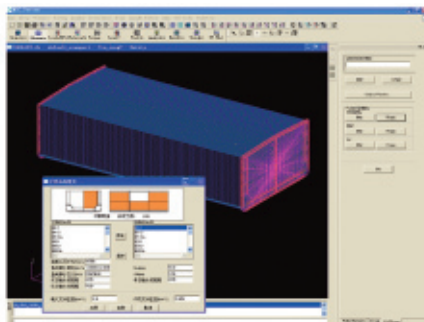


CCS makes full use of her expertise in the assessment service to provide technical support to clients. CCS will, in accordance with the scope and technical standards (i.e. applicable requirements including CCS rules, international conventions and rules) given in Agreement of Ship Structural Assessment, calculate and analyze drawings of main parts of ships provided by clients such as hull structures, and then verify compliance. Through structural assessment, clients may

- ◎ Enhance CSR design expertise;
- ◎ Improve design ability of CSR;
- ◎ Shorten design and plan approval period.



CCS will issue a Certificate of Structure Assessment confirming in principle the designs having undergone structural assessments. This Certificate includes: general description of updates of ship types, basic class characters for hull structures, and drawing lists approved in principle. Clients may indicate in the specifications that the design has been "Approved by CCS". Although ship structural assessment can not be deemed as a substitution of plan approval, it will greatly facilitate plan approval for classification of the assessed ship types.



To download more service product files, please visit www.ccs.org.cn/en/spad.htm

Business Management Department, China Classification Society

Add: CCS Mansion, 9 Dongzhimen Nan Da Jie, Beijing China 100007

Tel: +86 10 58112548/50

Fax: +86 10 58112821

www.ccs.org.cn

E-mail: mm@ccs.org.cn