

共享技术进步 受益增值服务

*Share Our Exquisite Expertise
Benefit From Our Value-added Service*

To download more service product files, please visit www.ccs.org.cn/en/spad.htm

Tel : +86 10 58112037/2072

Fax : +86 10 58112807

E-mail: metel@ccs.org.cn



SM METE SERVICE

CCS is committed to working together with owners in improving the safety of ships, and to provide technical support for enhancing the safety of ship operation.

METE Service

The human element (qualification and management), safety level of the ship, particularly its structural safety level, and scientific emergency measures for ships in distress are three essential factors directly affecting the safe operation of the ship.

Human element

Structural safety

Emergency measures

With respect to the above key factors, the following measures, if taken, will significantly reduce potential risks to the ship, reduce operating cost and improve operation benefit.

Maintenance

Planned repair and maintenance scheme

Evaluation

Goal-based structural strength evaluation

Training

Training in inspection and maintenance of hull structure

ERS

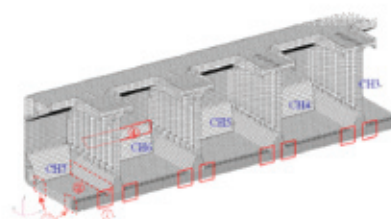
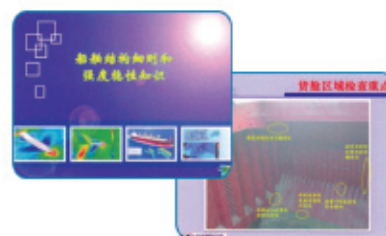
Emergency response measures

TRAINING IN HULL STRUCTURE INSPECTION AND MAINTENANCE

Human element is becoming more and more important to maritime organizations and shipping companies, due to the prosperous shipping market, increasing number of new crew members, tendency of developing larger ships, etc. Shipping companies are in urgent need of their crew members and engineers knowing well about hull structure and repair.

Through its ship-related theoretical research and survey practice in many years and in the light of current shipping conditions and key points of Port State Control (PSC) inspection, CCS has prepared a series of teaching materials taking into account the demands of crew members and engineers and the characteristics of their work. The Training in Hull Structure Inspection and Maintenance is one in the series, covering the basic knowledge of ship structure, key points of structural inspection and defect treatment, etc. This teaching material is close to the practice of crew members and engineers, explains complicated issues in simple terms and with many illustrations, and details criteria for surveys and repairs in an easily understandable way.

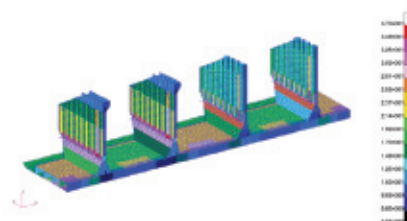
Studying this teaching material will help crew members and engineers to better carry out the inspection and maintenance of the ship and improve the safe operation of the ship.

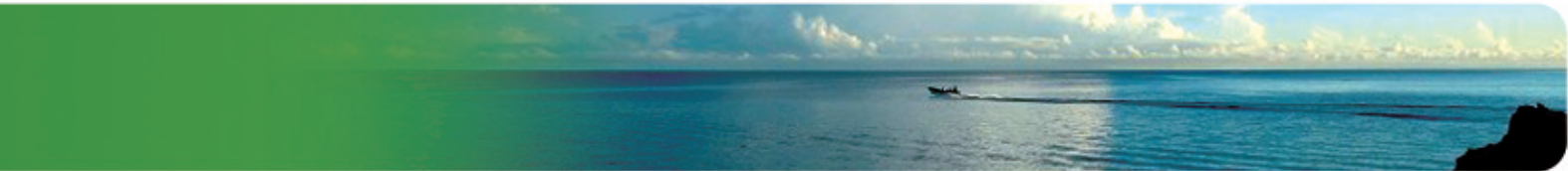


GOAL - BASED STRUCTURAL STRENGTH EVALUATION

The structural strength is one of the essential points for the safety of ships. In addition to the human element and heavy weather, the casualties caused by inadequate structural strength or hull structural damage have taken a significant proportion in recent-year marine casualties. Therefore, the structural strength of ships, especially large and old ones, has become a general concern in the shipping community.

For a shipping company, the ready grasp of structural strength of its fleet is of vital importance to maintaining safe operation. The structural strength evaluation will:



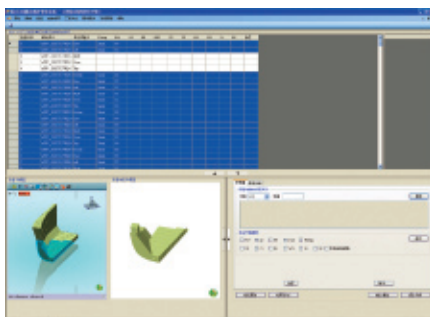


- ◎ provide specialized advisory information on structure of the ship to the owner;
- ◎ provide reference to repair and maintenance of the ship for crews and superintendents;
- ◎ guide crews and superintendents in inspection of hull structure;
- ◎ provide reference to control of corrosion during service period of the ship;
- ◎ add to technical accumulation and provide reference for the owner to development and selection of ship types in the future.



PLANNED MAINTENANCE SCHEME FOR HULL

Increasing attention is being paid to the planned maintenance scheme for hull. With planned inspection, repair and maintenance of hull structure and equipment, the technical condition of hull may be exactly grasped and defects of the ship properly tackled in time. The refined reminders for job details, in which the requirements in conventions and rules for maintenance of the ship are integrated and evaluation results of hull structural strength are taken into account, will give specific guidance to crew members in maintenance of hull structure and equipment. In this way, the maintenance of ships will be more scientific, the crew management more practical, and the development of repair plans more reasonable, thus alleviating the pressure on machinery management to control periods of repairs.



CCS provides assistance to owners in developing the maintenance scheme and in supervising its implementation, to achieve:

- ◎ a maintenance scheme based on the ship's condition, focused on reliability and combined with classification/statutory survey requirements;
- ◎ planned inspection, repair and maintenance, thus reducing unplanned repairs affecting normal operation of the ship, and;
- ◎ to reduce operational risks and increase the company's confidence in safety level and reliability of its ships;
- ◎ make reasonable ship-repairing plans.

CCS EMERGENCY RESPONSE SERVICE(CCS - ERS)

—— providing quick and reliable solutions

Once a ship owner has signed ERS agreement with a classification society, and an ERS database has been established containing information on stability and structural strength of the relevant ship, a permanent shore-based emergency response system of the society will be actuated quickly upon the application of the ship owner in case of an accident, e.g., collision, grounding and oil spillage, etc. The ERS database will be accessed and damage stability, damage strength and oil spillage will be calculated and analyzed as required by the ship owner. In this way, technical solutions are provided to the master/ship owner, which assist them in making the final decision to rescue the ship in distress.