

共享技术进步 受益增值服务

*Share Our Exquisite Expertise
Benefit From Our Value-added Service*

To download more service product files, please visit www.ccs.org.cn/en/spad.htm

ERS Command Center

Tel : +86 10 58112055/2030/2071

Fax : +86 10 58112807

E-mail: ers@ccs.org.cn

www.ccs.org.cn/gb/Classedships/Classedship6_1.htm



CCS-ERS

Emergency Response Service

— Timely, Reliable, and Effective Solutions

CCS-ERS Emergency Response Service

Under the sanction of the Administration and with the cooperation of the relevant ship's owner/operator, CCS introduced a distinctive product based on rich experience of emergency calculation for ships in distress named as "CCS-ERS" which means "Emergency Response Service for ships".



CCS-ERS serves all ships regardless of their flags and classes.

Two CCS-ERS expert groups provide 24-hour ERS service in 365 days a year.

To actuate ERS needs only an emergency phone call.

CCS-ERS helps customers comply with the requirements from OPA '90, MARPOL 73/78 and other national regulations.

CCS-ERS assists customers on ship risk management in advance.

WHAT SERVICE CAN ERS PROVIDE?

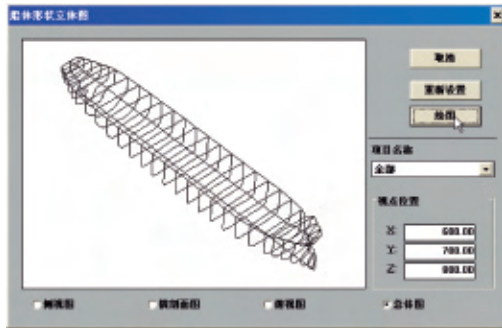
- 1) Damage stability and floating condition analysis
- 2) Residual longitudinal strength analysis
- 3) Grounding stability and longitudinal strength analysis
- 4) Damage oil spillage assessment
- 5) Intact stability assessment in the event of firefighting water trapped in decks of passenger ships
- 6) Solutions on how to maintain the minimum stability and ensure strength safety in case of an accident



HOW TO REGISTER FOR ERS?

- 1) Ship's owner/operator sends an CCS-ERS registration application to CCS
- 2) When the application is satisfactorily reviewed, CCS signs the ERS agreement with the ship's owner/operator
- 3) The ship's owner/operator provides CCS with the final plan and documents of the ship
- 4) CCS creates an effective computer database for the registered ship according to its final plan and documents

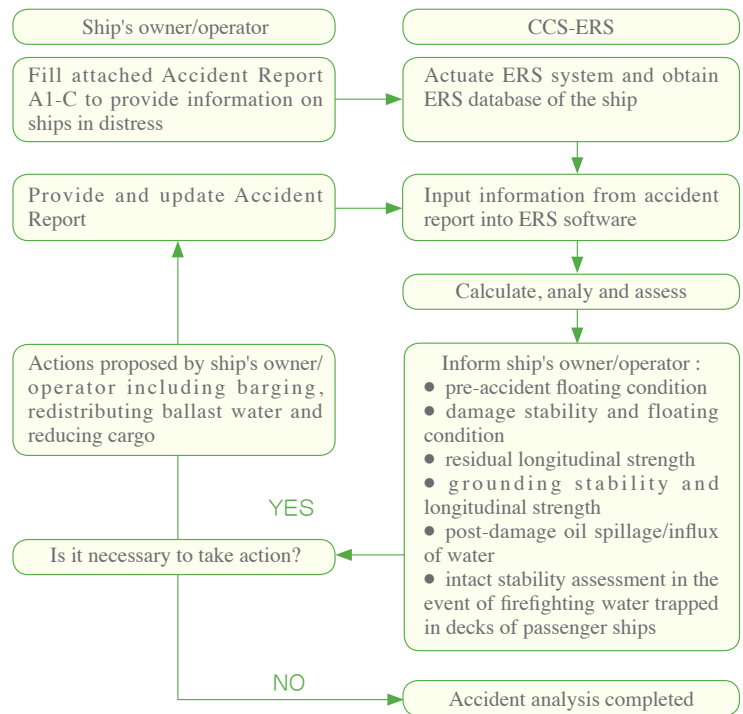




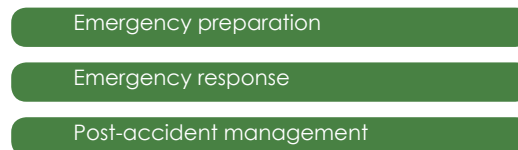
ERS SOFTWARE - SIMPLE, EASY AND EFFECTIVE

For the purpose of ERS, CCS has developed the special software called "COMPASS-ERS", which is used by the CCS-ERS to do calculation, analysis and assessment for ships in distress and to provide timely, reliable, effective solutions and suggestions for ship's owner/operator.

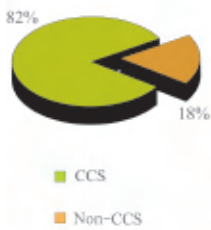
EMERGENCY PROCESS



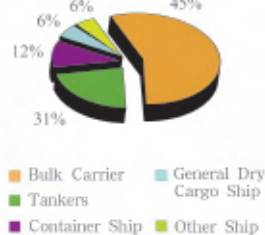
SERVICE CYCLE



Types of ERS Ships



Types of ERS Ships



DEVELOPMENT (BY THE END OF 2009)

- Providing service for over 150 shipping companies
- Covering CCS-classed ships and some non CCS-classed ships
- Having provided ERS for sea accidents
- Contracted to about 1000 ships
- Having conducted many joint ERS drills with ship's owner/operator