

CAP Service

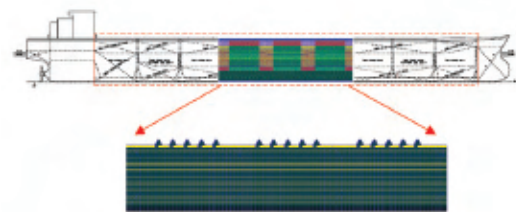
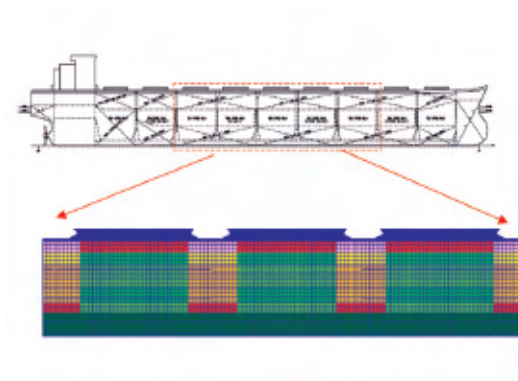
The condition assessment programme (CAP) is applicable to tankers and bulk carriers of 15 years of age and above, and may well be used for tankers and bulk carriers at other ages and for other types of ships.

It is a technical service to provide for applicants with no relation to the class of ship. It is an independent and thorough verification to rate the actual condition of the ship, based upon detailed inspection and function testing, thickness measurements and strength calculation and performance testing.

The charterers, flag states and pore state authorities are interested in the ships with CAP rating 1 or 2.

Possessing CCS' reports and CAP certificate can benefit from:

- ⊙ Increasing chartering opportunities
- ⊙ Maximized residual asset values
- ⊙ Early identification of deficiencies
- ⊙ Extension of the lifetime



CAP Service



PURPOSE

To provide applicants with a document and statement of ship's actual condition such as structural strength, machinery and maintenance of ship's life, etc. in order to verify that the ship is in compliance with the requirements of CCS Rules and could be used towards cargo owners and/or authorities in connection with entry into new charters or renewal of existing ones beyond expiring dates. The CAP can also establish a sound basis for decisions on repair or investments in order to extend the lifetime of the ship.

COMPOSITION

In general, the CAP consists of two modules, one is CAP for hull structure (HCAP) and the other CAP for machinery (MCAP). The applicant may select the whole or one module or parts of it only, if applicable. However, illustration is to be given on the application. HCAP is to include check of documents and records onboard the ship, visual inspection of hull structural members, thickness measurement, strength calculation and scale of rating. MCAP is to include check of documents and records, visual inspection, function test, collection and measurement of machinery parameters, vibration measurement and oil sample analysis, and rating. The items of inspection for MCAP include main/auxiliary engine, propulsion system, boiler and pressure vessel, general piping system, electric/automatic system, deck machinery and liquid cargo machinery and piping, etc.



To download more service product files, please visit www.ccs.org.cn/en/spad.htm

Business Management Department, China Classification Society

Add: CCS Mansion, 9 Dongzhimen Nan Da Jie, Beijing China 100007

Tel: +86 10 58112548/50

Fax: +86 10 58112821

www.ccs.org.cn

E-mail: mm@ccs.org.cn